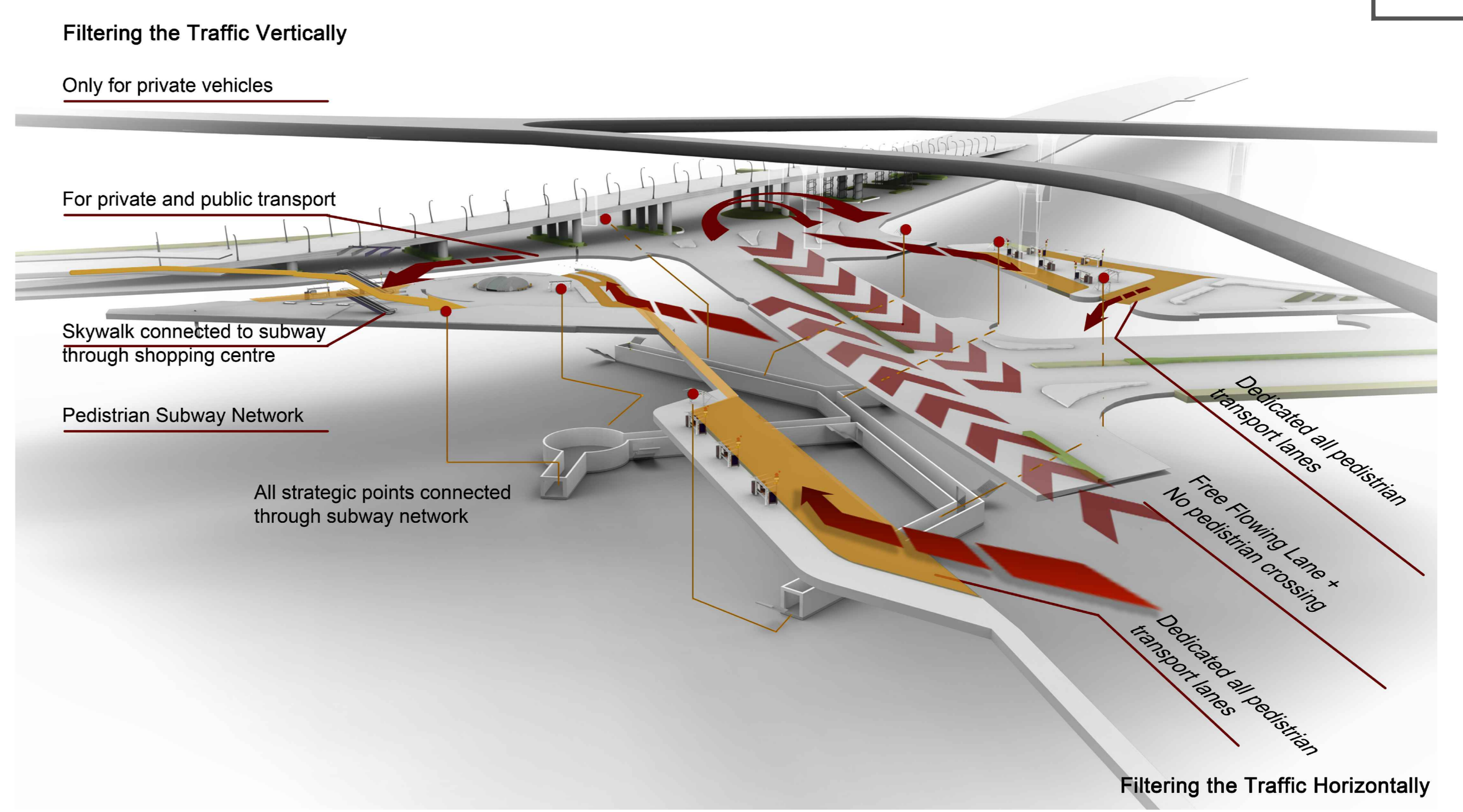
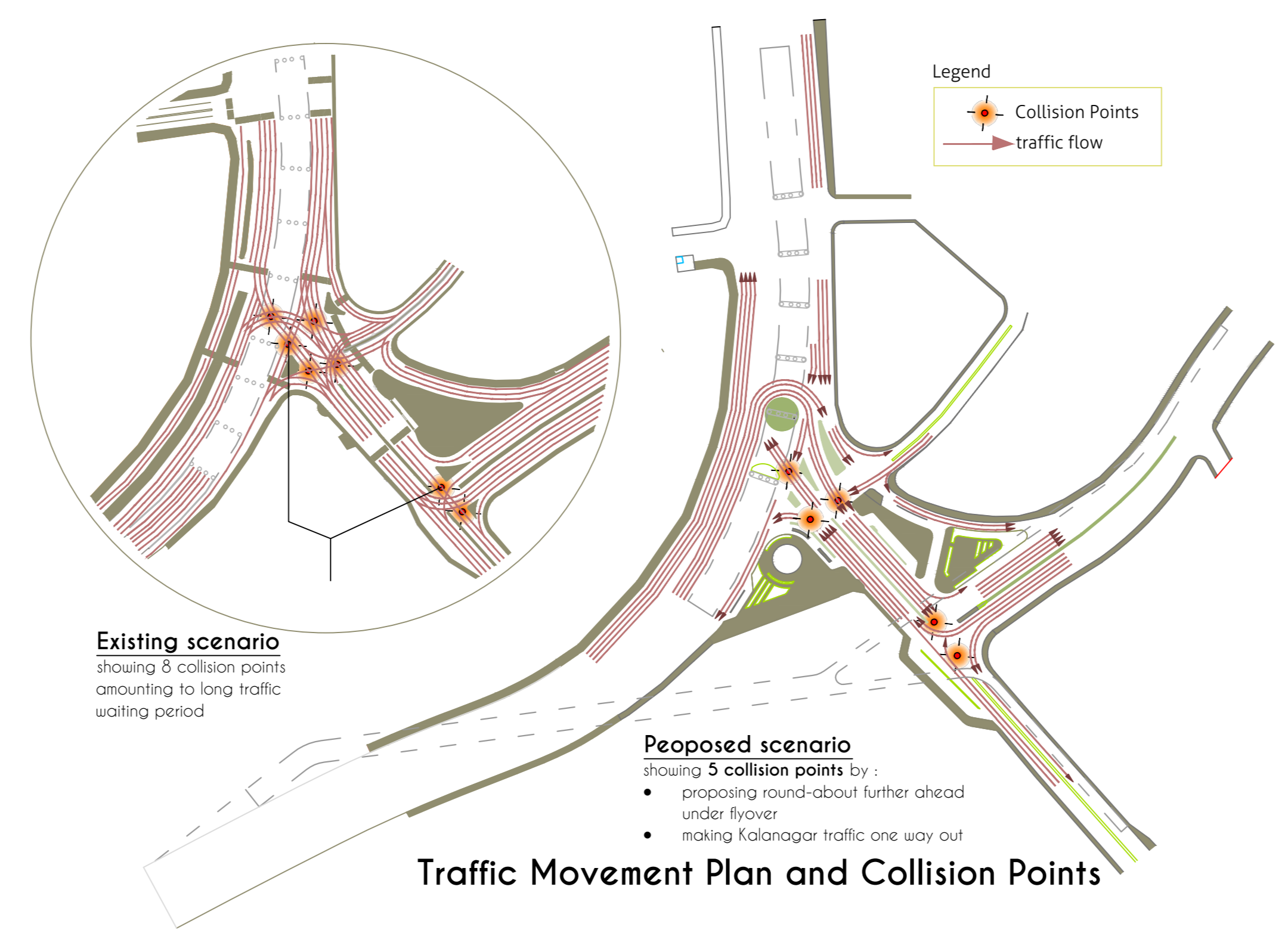
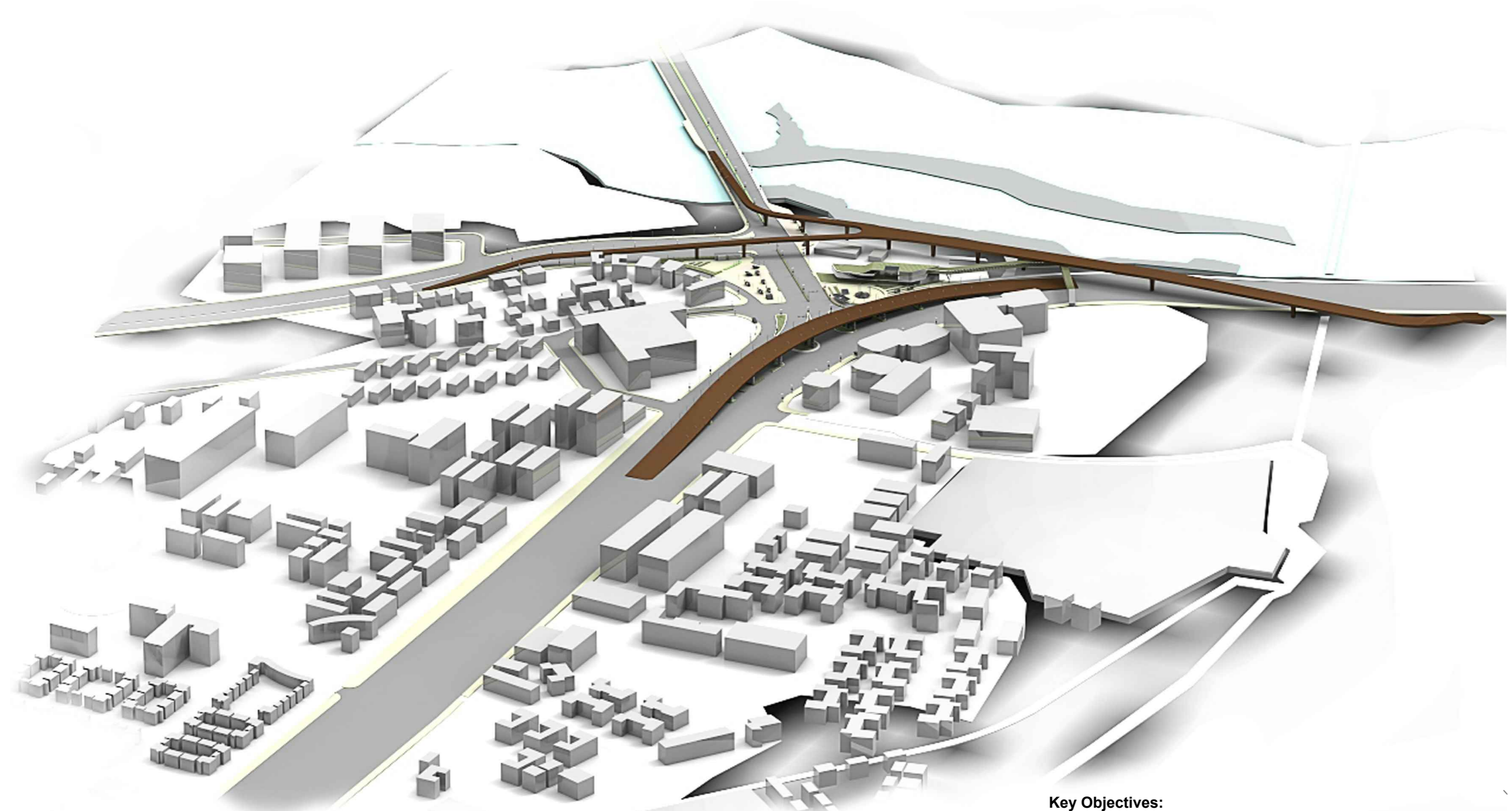


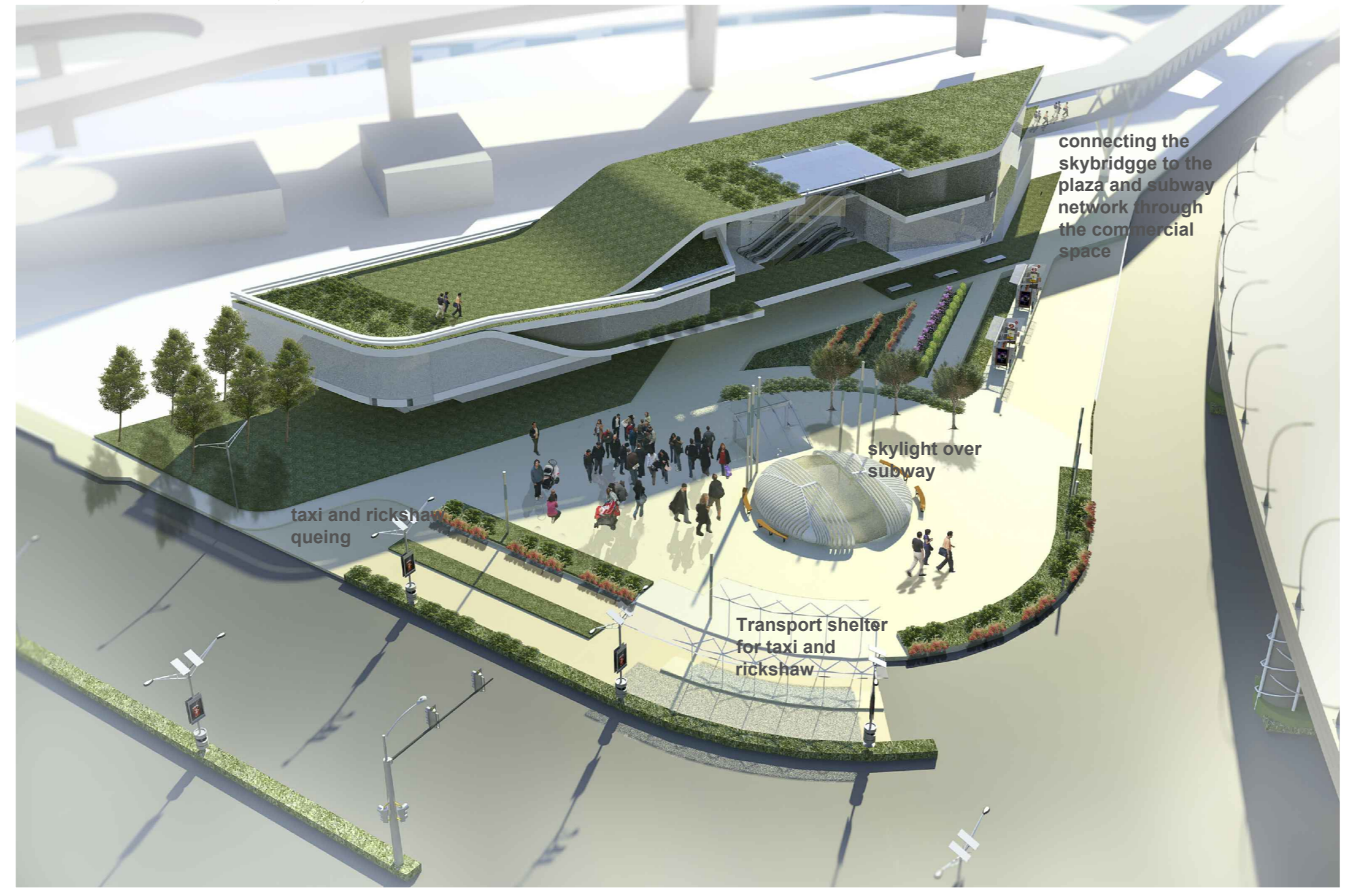
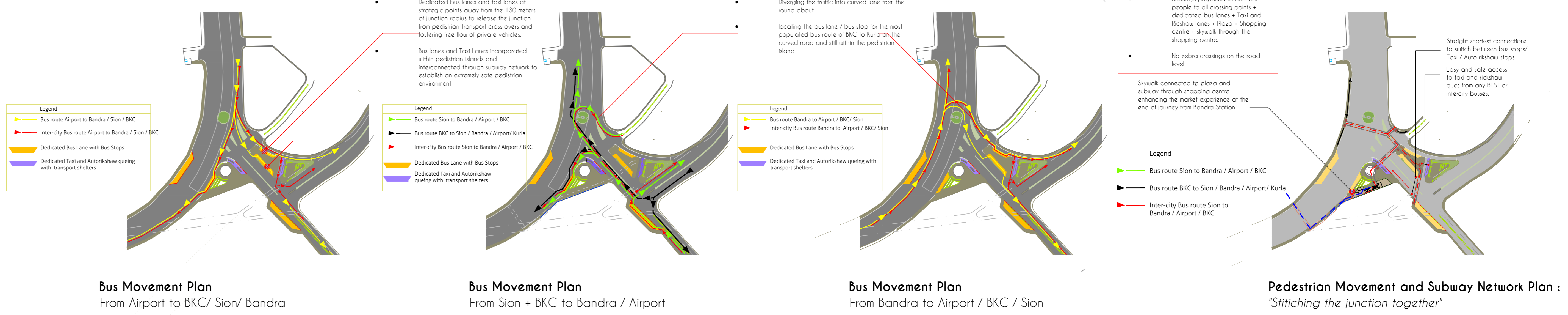
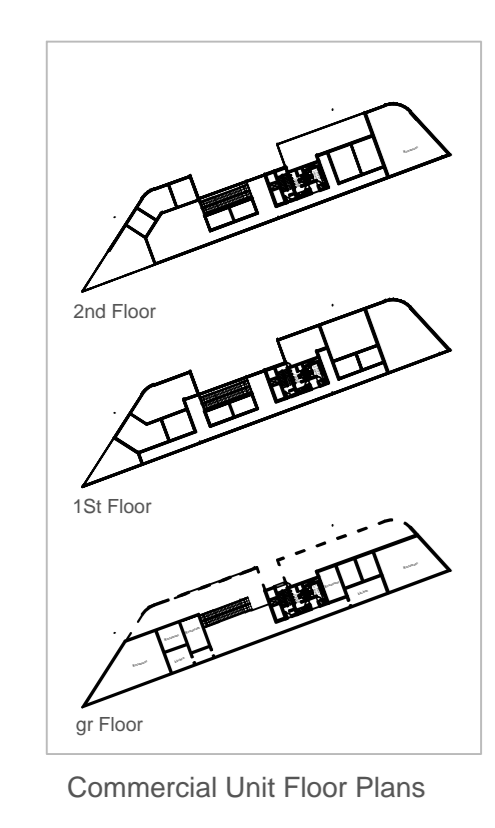
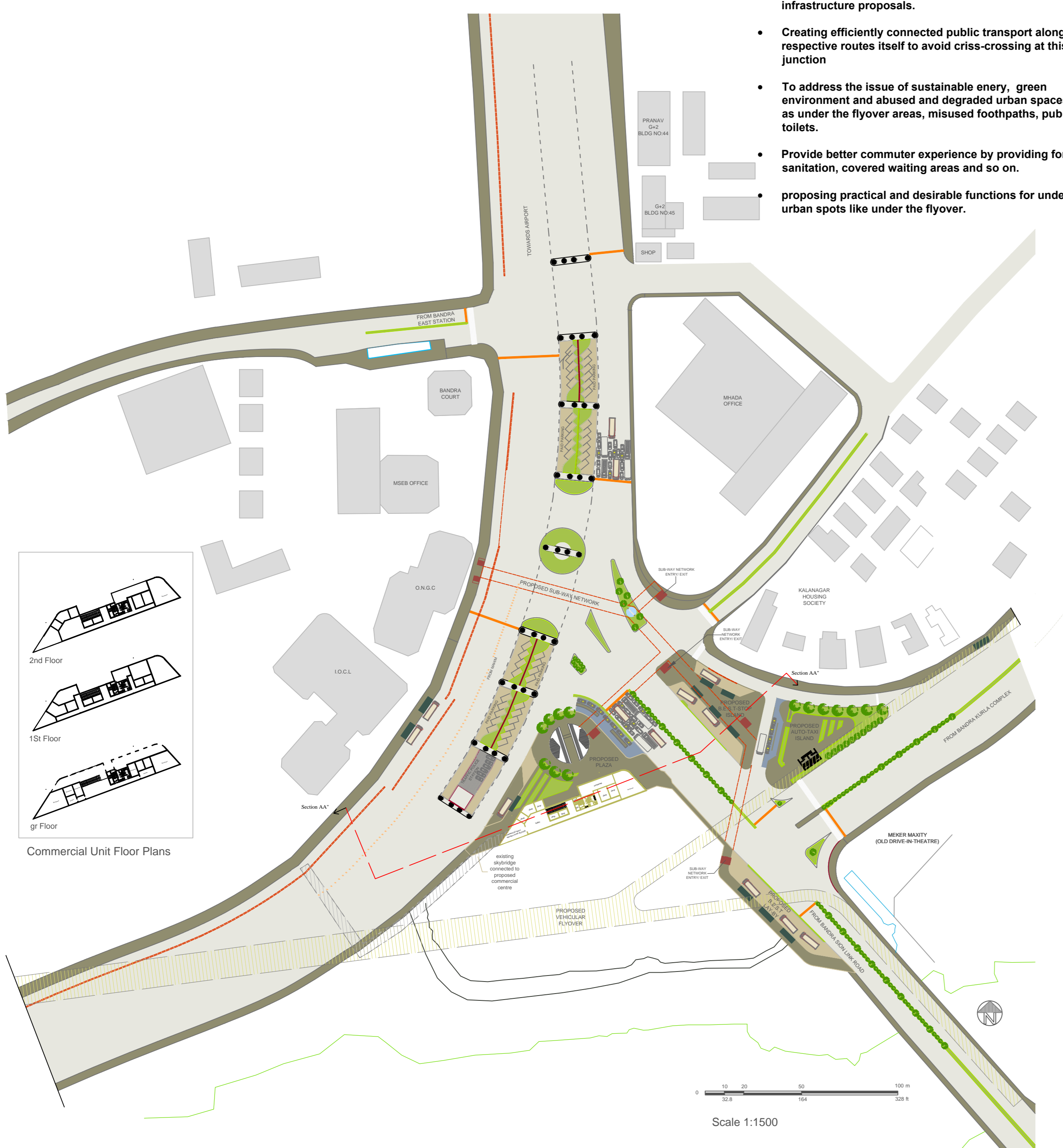
"The aim is to establish a trend across Mumbai towards a realistic and sustainable growth between safe pedestrian activities, public transport, retail spaces and green environment"



REVITALIZATION PROPOSAL FOR KALANAGAR JUNCTION

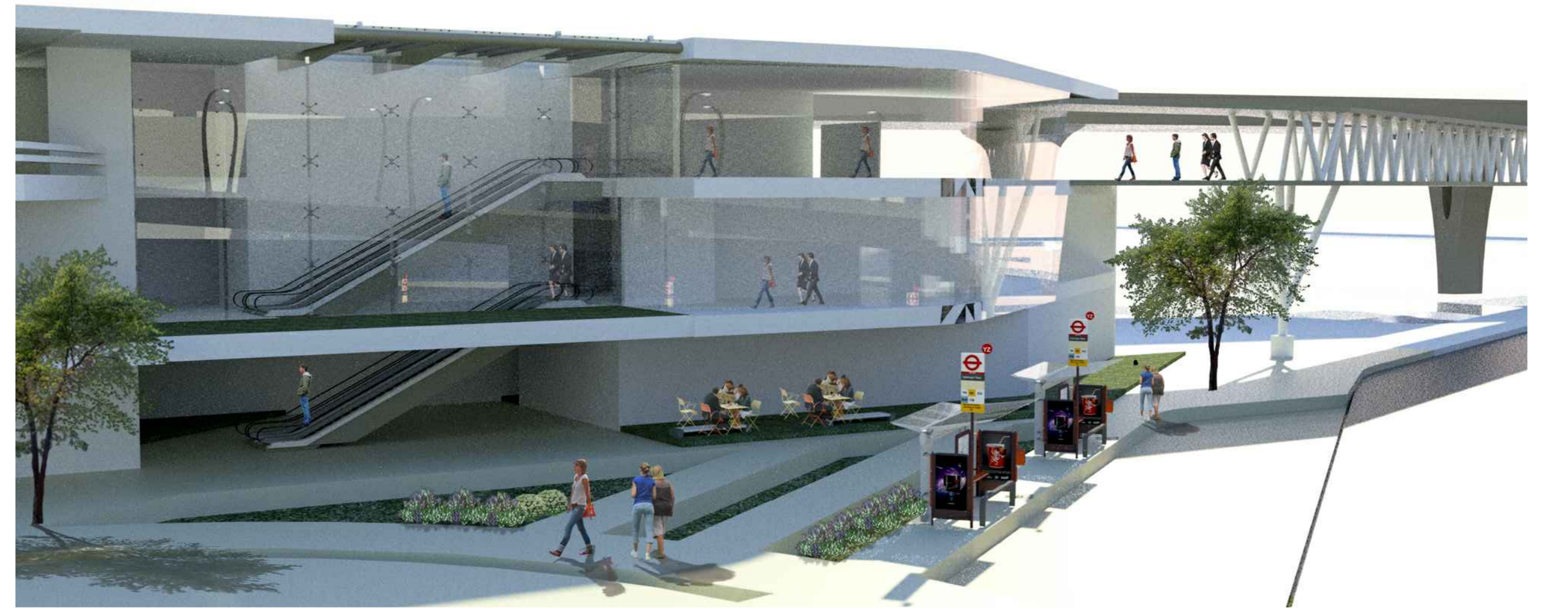
Key Objectives:

- Quick, shortened and safe pedestrian movement across the junction between transport stop overs through subway network.
- Regulate traffic flow and minimizing collision points with round about which would also direct major traffic to BKC via the curved road.
- To provide intelligent commercial spaces
- To redesign the garden space in the form of plaza to create a more efficient organization of pedestrian activities, retail spaces and public transport and future transport infrastructure proposals.
- Creating efficiently connected public transport along the respective routes itself to avoid criss-crossing at this critical junction
- To address the issue of sustainable energy, green environment and abused and degraded urban spaces such as under the flyover areas, misused footpaths, public toilets.
- Provide better commuter experience by providing for public sanitation, covered waiting areas and so on.
- proposing practical and desirable functions for under-used urban spots like under the flyover.



"Connecting Skywalk to a more enhanced commuter experience"

- Connecting the existing subway to proposed plaza and subway network through commercial space.
- Giving a market shopping experience for commuters in a more elegant organization of retail spaces.



"Taking a step towards Greener Urban Fabric and Sustainable Environment"

- Introducing green buildings for a controlled energy consumption and injecting fresh green usable spaces in the concrete urban fabric.
- Treating degraded micro urban spaces like under the flyovers with landscape sculptures and green sculpture wall.
- Making a move towards using solar powered street lights with built in waste bins to reduce the energy consumption of and a cleaner environment the city.

