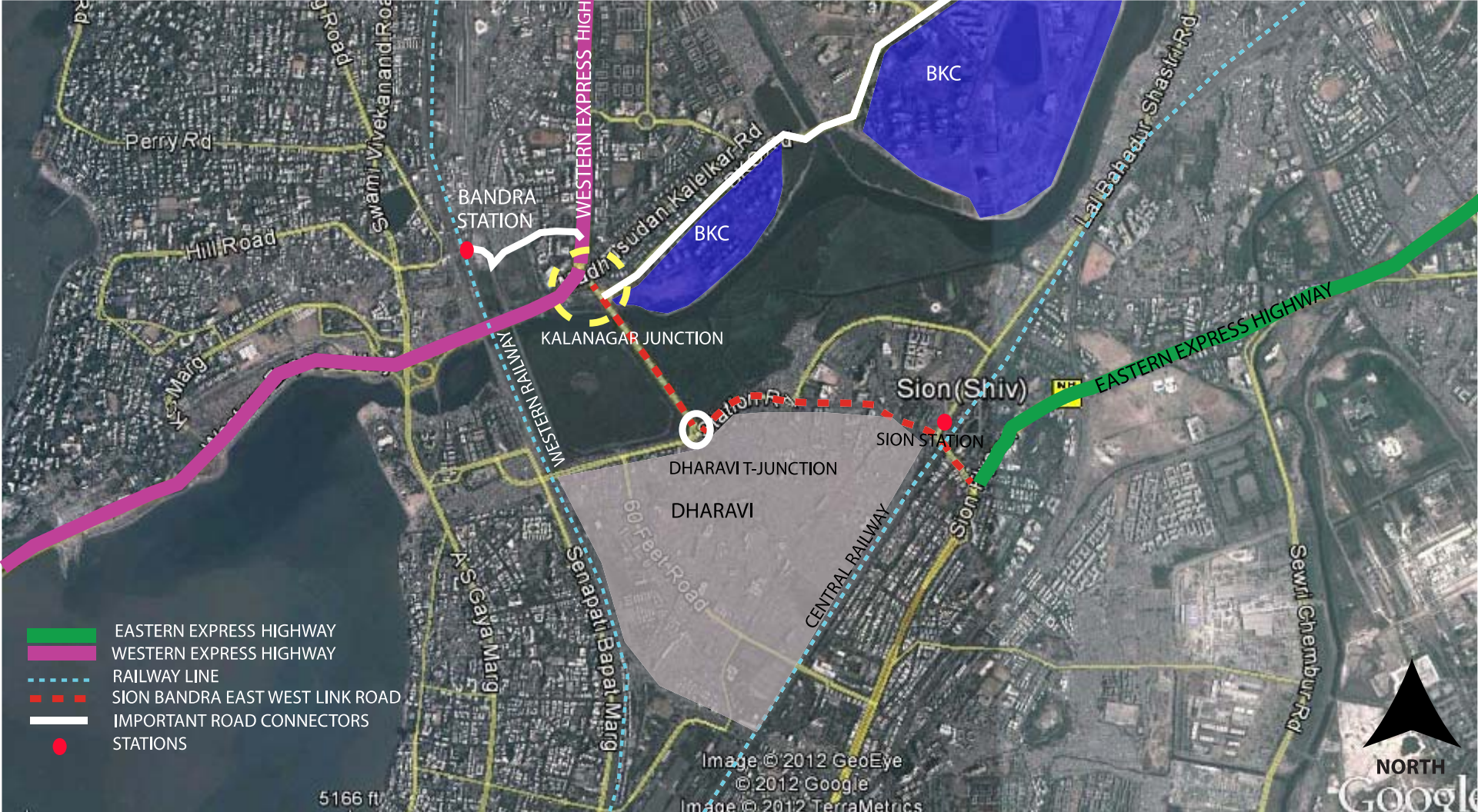


Can small scale and short term interventions help solve urban problems?

Can they address issues both at micro and macro level based on sustainability and equitability?

Can we provide a platform for community engagement in urban projects?



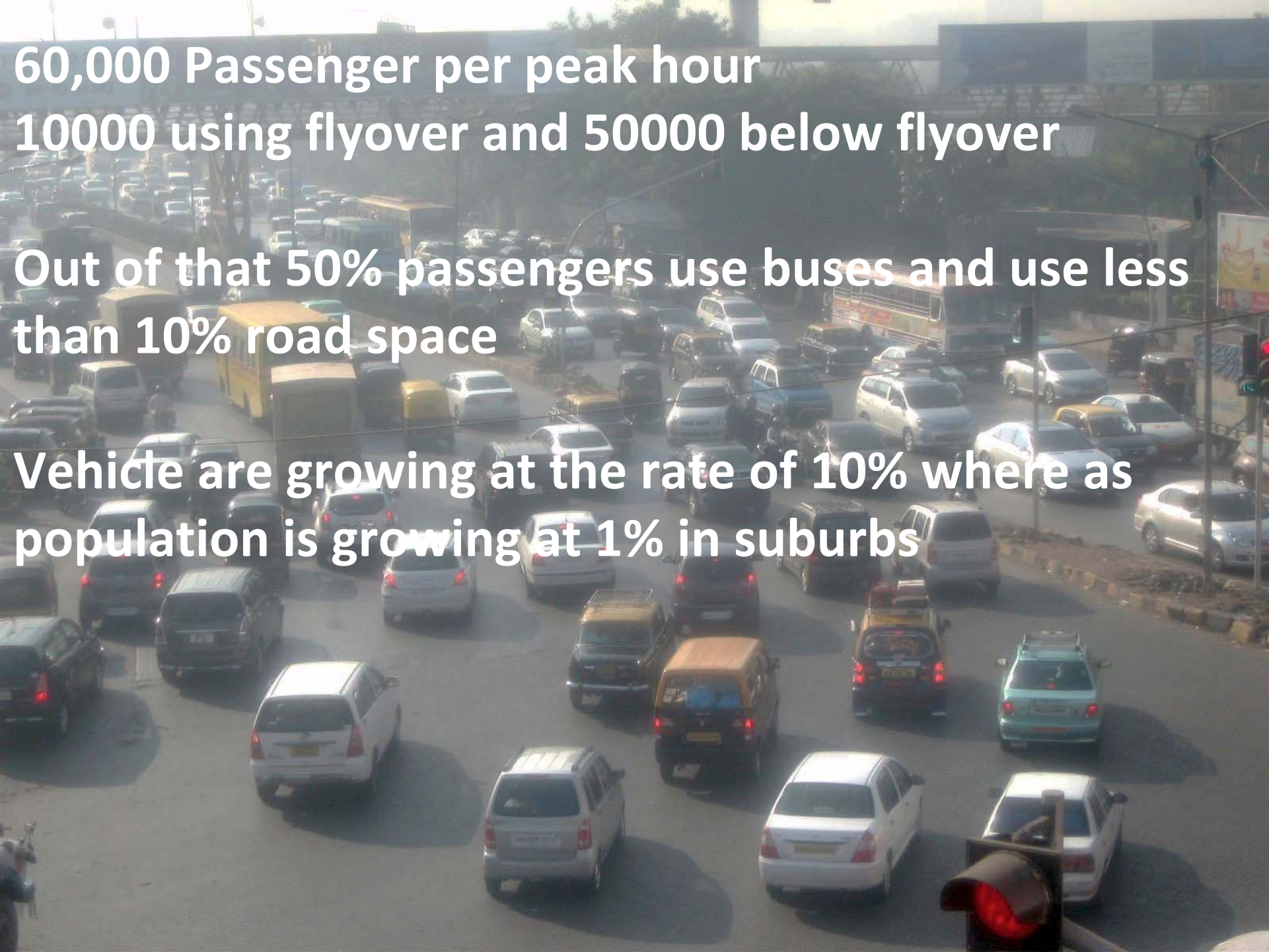
Accessibility to BKC as new city center  
 Poor east west connectivity



60,000 Passenger per peak hour  
10000 using flyover and 50000 below flyover

Out of that 50% passengers use buses and use less than 10% road space

Vehicle are growing at the rate of 10% where as population is growing at 1% in suburbs





Per peak hour 4000 pedestrians use road crossings  
Where as less than 600 pedestrians use skywalk









**Free car  
parking on  
the expensive  
public roads**





# Use of expensive and scarce public space

